



# Peak Power Rebate Program

- ▶ Earn Rebates
- ▶ Help the Environment
- ▶ Reduce Energy Consumption

# Help the Environment by Reducing Energy Consumption and Earn Rebates for Reducing Your Electric Demand.

## Peak Power Rebate Program

Participating in AmerenUE's Peak Power Rebate (PPR) Program can help reduce the demand for energy and also reduce emissions from power plants.

With UE's Peak Power Rebate Program, your business gets paid for voluntarily reducing electric use during peak times. Again, this is a voluntary program – but there are some minimum participation requirements.

- ▶ You will be paid a minimum of \$0.20 per kWh reduced. That is about four times more than what AmerenUE charges for electric usage.
- ▶ We expect to offer price response events totaling up to 60 hrs. per year.

To qualify, you need . . .

- ▶ An AmerenUE electric account
- ▶ To be on rate 3(M), 4(M), or 11(M)
- ▶ The ability to reduce load by at least 200 kilowatts (kW)
- ▶ An interval meter with communications equipment
- ▶ A computer with Internet access and a phone
- ▶ A plan that can reduce your electric demand
- ▶ To complete the enrollment process

## How Do I Get Started?

1. Contact the UE Business Energy Efficiency Team to request additional information.
2. If your business is eligible, complete the online enrollment form.
3. Be prepared for your notice to reduce and earn large rebates!



## How Does the Program Work?

Simply go online to enter the kW you are willing to reduce and to accept the hourly offer. Here are the steps:

- 1 You will receive an e-mail notification of each 'price response event' and will be instructed to go to UE's Web site.
- 2 Log in with your user ID and password to view hourly offers alongside your historical 10-day hourly baseline usage.
- 3 Enter the amount you can reduce for each hour (min. 200kW) and click submit.
- 4 An estimate of your total rebate is calculated online. Your actual rebate is calculated after the meters are read and verified.
- 5 The rebate is applied to your bill, or a check is mailed within four to six weeks. You can review your actual rebate online 7-10 days after the date of the event.



## How Can I Manage My Load?

- ▶ Reduce lighting
- ▶ Reduce cooling
- ▶ Shut down non-essential equipment
- ▶ Defer production to a later time or shift when electricity is not in great demand
- ▶ Employ standby generators

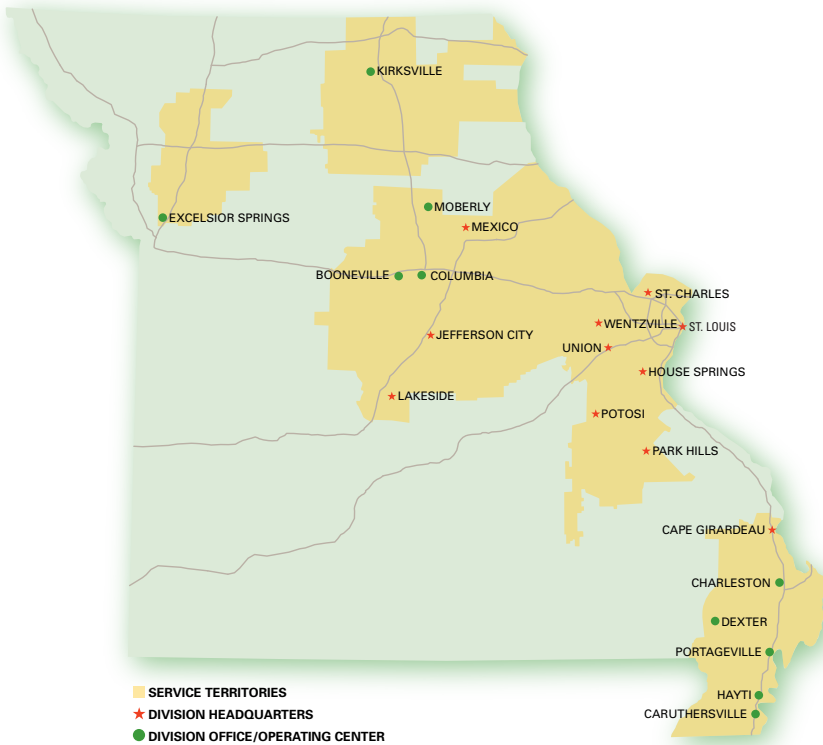
By voluntarily reducing your electric use when requested, you can help improve air quality and lower the peak demand for energy —

**deferring UE's need to build or buy power supply in the future.**

This will help keep UE rates among the lowest in the country and help to maintain a clean, reliable, and cost-effective electricity supply in Missouri.

# For More Information

- ▶ Visit us online at [www.ameren.com/BIZefficiency](http://www.ameren.com/BIZefficiency)
- ▶ Call the UE Business Energy Efficiency Team toll-free at 866.941.7299
- ▶ Email us at [BIZefficiency@ameren.com](mailto:BIZefficiency@ameren.com)



*The Peak Power Rebate (PPR) Program applies to all AmerenUE service areas. Residential, Rate 2(M), and 12(M) customers are not eligible. Please refer to terms and conditions of the Missouri Rider L for complete details.*

*First PPR program year is effective July 9, 2009 – May 31, 2010*



AmerenUE  
Peak Power Rebate Program  
P.O. Box 66149 MC 921  
St. Louis, MO 63166-6149  
Toll-free: 866.941.7299  
Fax: 314.814.8900  
[www.ameren.com/BIZefficiency](http://www.ameren.com/BIZefficiency)