

**Got an emergency?**  
After-hours access to the part you need is available with just one call.



To access French Gerleman's inventory after normal business hours, visit [www.frenchgerleman.com](http://www.frenchgerleman.com) or call the toll-free number of the French Gerleman location nearest you and follow the prompts. After 5 p.m. or on weekends and holidays, your call will be routed to our on-call representative, who will return your call within 15 minutes. Extra charges may apply to after-hours phone inquiries.

## French Gerleman: supplying more than just products

French Gerleman provides a comprehensive inventory of physical layer products and accessories for all of your voice, data and video applications. We partner with the industry's leading manufacturers of structured cabling products to ensure that you always get the right combination of technology, reliability and value.

If you need more assistance, we're here to help bring your project to fruition with our customized pre- and post-sale support and project management services. French Gerleman also has an RCDD on staff to provide design assistance to customers who need help in developing RFPs (requests for proposal) and specifications for their structured cable systems. We can also help you throughout the bid process by recommending qualified contractors and reviewing bids to ensure that you get the system you want.

French Gerleman's DataCom staff of engineers and product specialists are highly trained in network infrastructure and can also provide hands-on training in a broad range of disciplines, including cabling, network design, troubleshooting and related topics. Just ask your DataCom sales representative how you can arrange training for your employees.

**Visit our Sales Counters for  
all of your DataCom needs**

Monday - Friday, 7 a.m. - 5 p.m.

## How to find us

**St. Louis**  
2446 Schuetz Road  
Maryland Heights, MO 63043  
800-333-3122  
314-569-3122  
314-569-0206 Fax

**Kansas City**  
9735 Commerce Parkway  
Lenexa, KS 66219  
913-894-8844  
800-707-3122  
913-894-4485 Fax

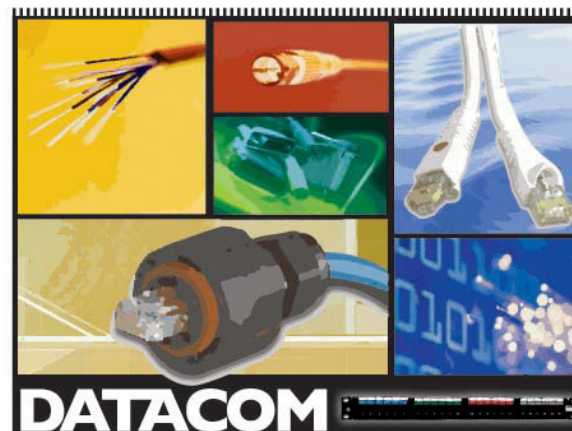
**Columbia, MO**  
1815 Vandiver Drive  
Columbia, MO 65202  
800-283-3122  
573-474-4194  
573-474-4199 Fax

**Quincy, IL**  
920 Vermont  
Quincy, IL 62301  
800-234-3122  
217-223-3122  
217-223-3907 Fax

**Washington, MO**  
1 Chamber Drive, Suite A  
Washington, MO 63090  
888-959-9948  
636-390-4949  
636-390-4172 Fax



[www.frenchgerleman.com](http://www.frenchgerleman.com)



**Supply & Service Center**

## DataCom Product Lines

### Brand List

3Com  
3M  
Alcoa-Fujikura Ltd. (AFL)  
Allied Telesyn  
American Power Conversion (APC)  
Applicom (Woodhead Connectivity)  
Belden  
Belden CDT  
Belden Network Cable  
Best Power (Invensys Powerware)  
B-Line Systems (Cooper)  
Brady Identification Solutions  
Cablofil  
Cadweld (Erico)  
Carlson (Lamson & Sessions)  
Chromatic Technologies  
Cisco Systems  
Clauss  
CommScope Cable  
CommScope Uniprise  
Comtran Cable  
Conduit (Generic)  
CSI Speco  
Custom Patch Cords  
DataCom Technologies  
Dell  
Dura-Line (Emerson)  
Fluke  
GC Electronics  
Geist Manufacturing Inc  
Greenlee (Textron)  
Helix Hi-Temp  
Hoffman (Pentair)  
Hoffman Schroff (Pentair)  
Honeywell Genesis  
Hubbell  
Hubbell Premise Wiring  
Ideal DataComm  
Ikegami

KTI  
Klein Tools  
MGE  
Microsoft  
Milan  
Minerallac  
Multilink  
Netscout  
Nitek  
Noyes Fiber (AFL)  
Olex  
Optical Cable Corporation  
Optivision  
Panasonic Corp. of America  
Panduit  
Panduit Network Cable  
Petroflex  
Porta Systems  
Princeton  
Progressive Electronics (Textron)  
Quazite (Strongwell)  
SMC  
STI Firestop  
Siemon Cabling Systems  
Signamax  
Sumitomo Electric  
Thomas & Betts  
Transition Networks  
Walker (Wiremold)  
Wiremold (Legrand)

### Brands by Product Type

**Adapters**  
GC Electronics

**Audio**  
Belden

**Boxes**  
Carlson (Lamson & Sessions)  
Hoffman

**Brackets**  
Hubbell Premise Wiring  
Panduit  
Siemon Cabling Systems

**Building Entrance Terminals**  
Porta Systems

**Cable**  
Belden  
CommScope Cable  
Comtran Cable  
Honeywell Genesis

**Cable, Coax**  
Belden  
CommScope Cable  
Honeywell Genesis

**Cable, Fiber-Optic**  
Alcoa-Fujikura Ltd. (AFL)  
Belden  
Chromatic Technologies  
CommScope Cable  
Helix Hi-Temp  
Optical Cable Corporation  
Sumitomo Electric

**Cable, High-Voltage Computer**  
Belden

**Cable, Industrial-Grade Ethernet**  
Belden  
CommScope Cable

**Cable, Instrumentation**  
Belden  
Olex

**Cable, Outside Plant**  
Belden

**Cable, Plenum Computer**  
Belden

**Cable Accessories**  
3M

**Cable Jacks**  
Greenlee

**Cable Management**  
Hoffman (Pentair)  
Hubbell Premise Wiring  
Panduit  
Siemon Cabling Systems

**Cable Pullers**  
Greenlee (Textron)

**Cable Supports**  
B-Line Systems (Cooper)  
Hoffman (Pentair)  
Minerallac

**Cable Ties**  
3M  
Panduit  
Thomas & Betts

**Cable Tray**  
B-Line Systems (Cooper)  
Cablofil  
Hoffman (Pentair)  
Hubbell Premise Wiring  
Wiremold (Legrand)

**CCTV Equipment**  
CSI Speco  
Ikegami  
Panasonic Corp. of America  
Nitek

**Commercial Sound**  
CSI Speco

**Communication Wire Lube**  
3M  
Greenlee (Textron)  
Ideal DataComm

# DataCom Product Lines

## Brands by Product Type (continued)

### Compound, Cable-pulling

3M

### Conduit, Aluminum/DB/EMT/GRC/IMC

Conduit (Generic)

### Conduit, Fiber-optic

Carlson (Lamson & Sessions)

### Conduit, Plastic/PVC

Carlson (Lamson & Sessions)

Conduit (Generic)

Dura-Line (Emerson)

### Conduit Accessories

Carlson (Lamson & Sessions)

### Connectors, Coax

GC Electronics

Ideal DataComm

Thomas & Betts

### Connectors, Conduit

Carlson (Lamson & Sessions)

### Connectors, Fiber-optic

3M

Alcoa-Fujikura Ltd. (AFL)

Belden

CommScope Cable

Hubbell Premise Wiring

Panduit

Siemon Cabling Systems

### Connectors, Wire

3M

Panduit

Thomas & Betts

### Converters

3M

Signamax

Transition Networks

### Crimpers

Ideal DataComm

Thomas & Betts

### Cutters

Ideal DataComm

### Data Communications

#### Test Equipment

Ideal DataComm

Progressive Electronics (Textron)

### Data Communications Tools

Greenlee (Textron)

Hubbell Premise Wiring

Ideal DataComm

Klein Tools

Siemon Cabling Systems

### Data Testers

DataCom Technologies

Ideal DataComm

### Data/Voice/Video

Cisco Systems

### Duct, Under-floor

Walker (Wiremold)

### Duct, Wiring Panel Channel

Hoffman (Pentair)

Panduit

### Enclosures

Carlson (Lamson & Sessions)

Hoffman Schreff (Pentair)

Hubbell Premise Wiring

Quazite (Strongwell)

### Enclosures, Fiber-optic

Alcoa-Fujikura Ltd. (AFL)

Belden

CommScope Cable

Hubbell Premise Wiring

Panduit

Siemon Cabling Systems

### Enclosures, Floor-mount

Hoffman Schreff (Pentair)

Hubbell Premise Wiring

### Enclosures, Wall-mount

Hoffman Schreff (Pentair)

Hubbell Premise Wiring

### Equipment Racks, Electronic

Hoffman Schreff (Pentair)

Hubbell Premise Wiring

Panduit

### Ethernet, Industrial-Grade

Applicom

(Woodhead Connectivity)

Cisco Systems

### Face Plates

Belden

CommScope Uniprise

Hubbell Premise Wiring

Panduit

Siemon Cabling Systems

### Fiber-optic Fusion Splicing

Alcoa-Fujikura Ltd. (AFL)

### Firestopping Products

3M

STI Firestop

### Fittings

Carlson (Lamson & Sessions)

### Fittings, Conduit

Thomas & Betts

### Grounding Products

Cadweld (Erico)

Panduit

### Hangers, Conduit

B-Line Systems (Cooper)

Minerallac

Panduit

### Home Cabling Systems

CommScope Uniprise

Hubbell Premise Wiring

Panduit

Siemon Cabling Systems

### Home Theater

CSI Speco

### Hubs

3Com

Cisco Systems

Milan

### Identification Products

Brady Identification Solutions

### Innerducts

Carlson (Lamson & Sessions)

Dura-Line (Emerson)

Petroflex

### Interconnect Products

Ideal DataComm

### Internets

Cisco Systems

### Jacks

Belden

Hubbell Premise Wiring

Panduit

Siemon Cabling Systems

### LAN Products

3Com

Allied Telesyn

Cisco Systems

Fluke

### Light Sources

Noyes Fiber (AFL)

### Lockout-Tagout Products

Panduit

### Media Converters

KTI

Signamax

Transition Networks

### Media Transceivers

Transition Networks

### Monitors, Color

Princeton

### Network Adapters

SMC

### Network Cable Solutions for LAN Applications

Belden

CommScope Cable

Honeywell Genesis

### Network Probes

Netscout

### Network Products

Optivision

### Network Protection

American Power Conversion (APC)

Porta Systems

### Network Software

Netscout

### Networks, High-availability

Cisco Systems

### Networks, Management

Cisco Systems

### Networks, Policy

Cisco Systems

### Networks, Security

Cisco Systems

### OTDRs

Alcoa-Fujikura Ltd. (AFL)

Noyes Fiber (AFL)

### Patch Cords

Custom Patch Cords

Belden

CommScope Uniprise

Hubbell Premise Wiring

Panduit

Siemon Cabling Systems

## Brands by Product Type (continued)

### Patch Cords, Category 5

Custom Patch Cords

Belden

CommScope Uniprise

Hubbell Premise Wiring

Panduit

Siemon Cabling Systems

### Patch Cords, Fiber-Optic

Custom Patch Cords

Belden

CommScope Uniprise

Hubbell Premise Wiring

Panduit

Siemon Cabling Systems

### Patch Panels

Belden

CommScope Uniprise

Hubbell Premise Wiring

Panduit

Siemon Cabling Systems

### Patch Plates

Belden

CommScope Uniprise

Hubbell Premise Wiring

Panduit

Siemon

### Power Conditioners

American Power Conversion

(APC)

### Power Meters, Fiber-Optic

Alcoa-Fujikura Ltd. (AFL)

Noyes Fiber (AFL)

### Power Poles

Hubbell Premise Wiring

Wiremold (Legrand)

### Power Quality Products

American Power Conversion

(APC)

Best Power

(Invensys Powerware)

MGE

Wiremold (Legrand)

### Power Supplies

American Power Conversion

(APC)

CSI Speco

### Premise Wiring

Belden Network Cable

CommScope Uniprise Network

Cable solutions

Hubbell Premise Wiring

Panduit Network Cable

Siemon Cabling Systems

### Printers, ID Label

Brady Identification Solutions

### Raceway, Nonmetallic

Hubbell Premise Wiring

Panduit

### Raceway, Surface-Mount

Hubbell

Panduit

Siemon Cabling Systems

### Racks, Floor-/Wall-mount

Hoffman Schreff (Pentair)

Hubbell Premise Wiring

Siemon Cabling Systems

### Raised Flooring

Multilink

### Remote Access

Cisco Systems

### Repeaters

Transition Networks

### Routers

Cisco Systems

### Software

Microsoft

### Software, Analysis

Netscout

### Straps, Conduit

B-Line Systems (Cooper)

### Strippers, Cable

Ideal DataComm

### Strut Systems

B-Line Systems (Cooper)

### Supports

Minerallac

### Surge Protection

American Power Conversion (APC)

Geist Manufacturing Inc.

Porta Systems

Wiremold (Legrand)

### Surge Protection, Category 5

Porta Systems

### Surveillance

CSI Speco

Nitek

Panasonic Corp. of America

Optivision

### Switches

3Com

Cisco Systems

### Switches, Ethernet

3Com

Cisco Systems

### Test Equipment

Ideal DataComm

### Test Equipment for Fiber-optic

Networks

Alcoa-Fujikura Ltd. (AFL)

Ideal DataComm